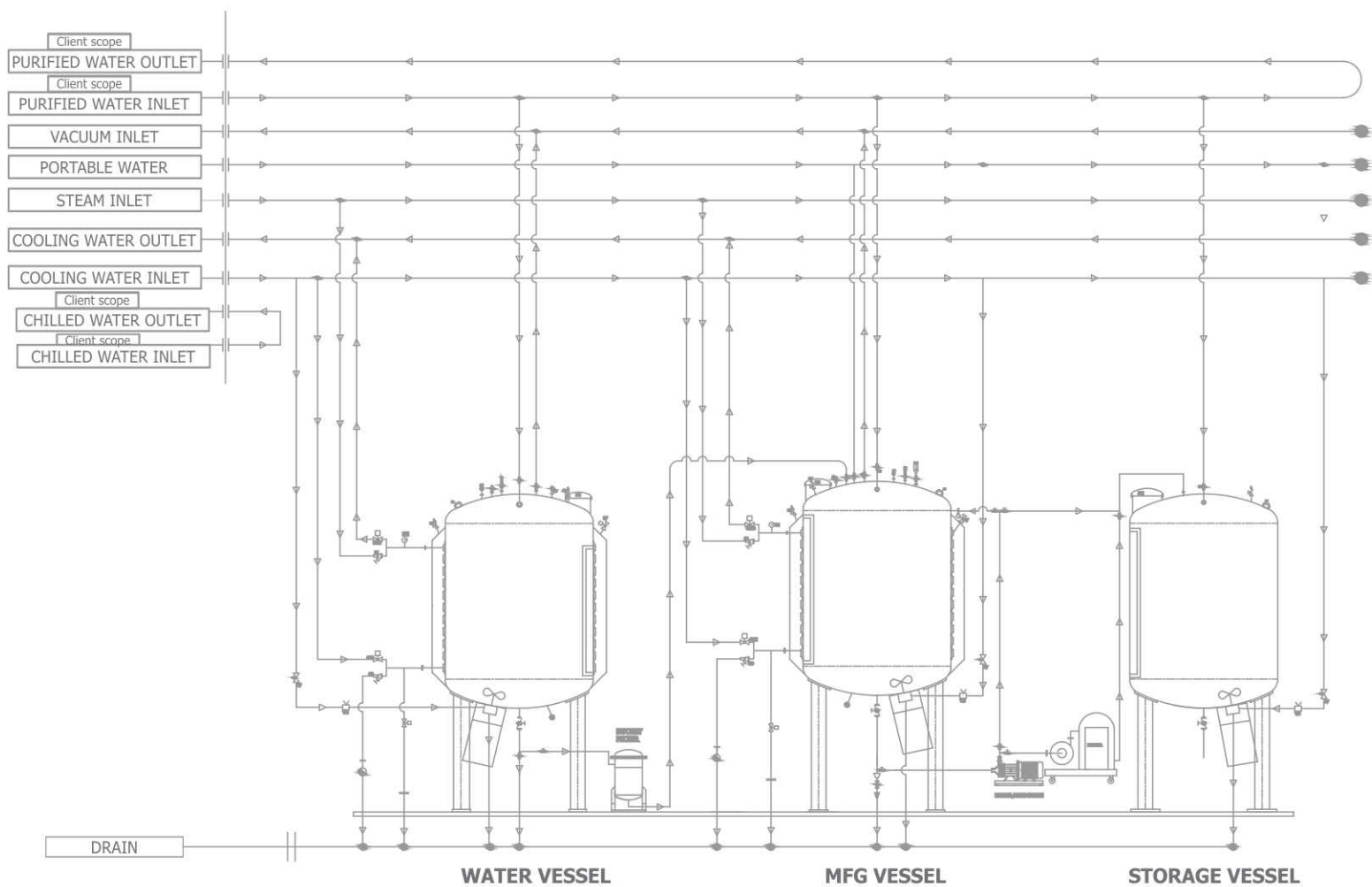


LIQUIPROSERVE

LIQUID-SUSPENSION-SYRUP MANUFACTURING PLANT



The Liquid Manufacturing Plant is a set of equipment designed for the manufacture of syrups, liquid oral formulations and other water based pharmaceutical products.

The Liquid Manufacturing Plants are ideal tools for the pharmaceutical industry for the production of Oral Liquids. It is specially designed to take care of two critical factors which directly affects the quality of the liquids.

Minimum man-handling of liquid and effective hygiene during manufacturing. It also provides the benefits of the effective manpower utilization.



Recommended for:

- Cough Syrups
- Drop Solutions
- Expectorant
- Suspensions

Specifications



Key Features :

- 50 ltrs – 30000 ltrs batch mixers
- Complete Untouched Process
- CIP / SIP able
- All wetted Parts are of SS 316/316 L Quality Material. All Pipelines are seamless & internally Electro-Polished
- Sugar Charging Done Under Vacuum. All transfers done under Vacuum.
- The sugar syrup and manufacturing vessels are provided with limpet coils for heating and cooling, and are designed with internal vacuum to facilitate transfer of sugar direct from stores to the sugar syrup vessel.
- The entry of all propeller agitators is from the bottom, through a specially designed mechanical seal face.
- The advantages of the bottom propeller agitator over conventional agitators is that, it include no vibrations in the shaft and no coupling in the drive assembly, leading to lower maintenance costs.
- Inline filters to ensure filtration.
- INLINE Homogenizer is provided for making suspensions, with recirculation
- Transfer Pumps provided to transfer ready product to filling line.
- Load cell for accurate weighing
- FLP System can be provided (Optional)

The Facility Consists Of

- Side vessel (Premix)
- Online side vessel prefilter
- Manufacturing vessel & storage vessel
- Vacuum system to transfer contents of sie vessels to manufacturing vessels.
- Product piping
- Control panel
- Transfer pumps
- Batch size 50 Ltrs. To 30,000 Ltrs.

LIQUIPROSERVE

Model	Working Capacity	Gross Capacity	Homongenizer / Propeller		Overall Height	Overall Width
	(ltr)	(ltr)	(rpm)	(kw)	(mm)	(mm)
LQPS 50	50	60	50-960	1	950	650
LQPS 100	100	120	50-960	1	1050	700
LQPS 200	200	240	50-960	1	1350	850
LQPS 500	500	600	50-960	5	1850	1050
LQPS 750	750	900	50-960	5	2200	1200
LQPS 1000	1000	1200	50-960	5	2450	1350
LQPS 2000	2000	2400	50-960	10	2950	1650
LQPS5000	5000	6000	50-960	15	3950	1900
LQPS 10000	10000	12000	50-960	30	4350	2550



S.K. Pharma Machinery Pvt. Ltd.

Office : 205, 2nd Floor, Bhoomi Velocity IT Park, Road No. 23, Wagle Indl. Estate,
Thane – 400604. Maharashtra, India

Tel. : +91 22 2580 6700 / 2580 1025 / 2583 3757 • Email: sales@skpharmamachinery.com

Works : 1806/13, GIDC, Phase III, Umbergaon, Dist. Valsad – 396171, Gujarat, India.

Tel. : +91 260 2561805 / 06