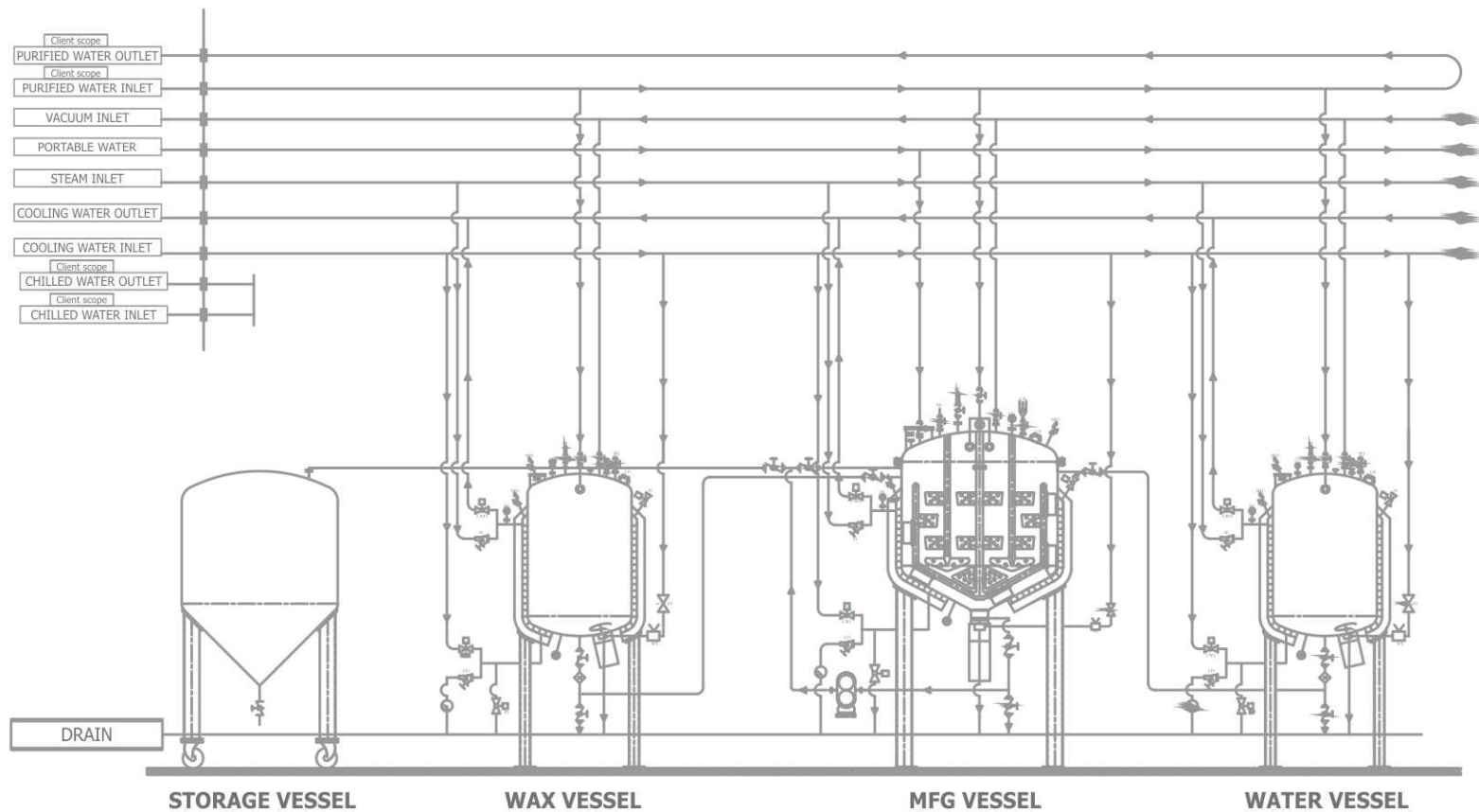


# SEMIUNIPROSERVE CREAM/GEL/OINTMENTS MANUFACTURING PLANT



Sk homogenizer, composed of an internal rotor-stator colloid tool, ensures excellent dispersal of droplets and particles efficiently.

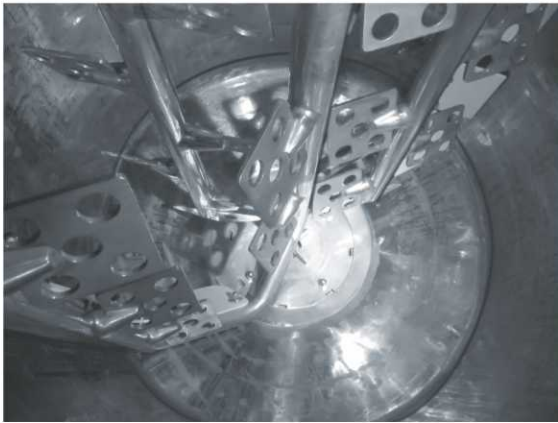
With SK's SemiUniProserve, time for homogenization are considerably shorter. The smooth product design reduces wear on the parts, thus increasing their lifetime.



### Recommended for:

- |           |                        |
|-----------|------------------------|
| Cream     | Shampoo                |
| Gel       | Conditioner            |
| Lotion    | Hand Washes            |
| Emulsion  | Hair Cosmetic Products |
| Ointments |                        |

# Specifications



## Key Features :

- Complete process of mixing, dispersing, emulsifying, homogenizing, vacuum, heating & cooling in one unit.
- The homogenizer also works as a transfer pump for discharging finished product.
- Batch time improvement.
- Special semi contra design of agitator blades.
- Automatic lid opening system
- Accurate temperature control even for small quantities
- Perfect particles and droplet size control
- Batch to batch repeatability.
- Load cell for accurate weighing
- Two line for product recirculation is provided to avoid wastage of material (One is short and other is long)

## Standard Version

- Pressure vessel with agitator
- Vacuum system
- Batch time improvement
- Homogenizer with Rotar Stator
- Double jacket with insulation
- Heating and cooling unit

## Options

- Various levels of automation
- Load cells and dosing units
- Comprehensive validation documentation

# SEMIUNIPROSERVE

Model	Working Capacity (kgs)	Gross Capacity (kgs)	Agitator/Anchor (A1)		Agitator/Anchor (A2)		Homogenizer / Propeler		Overall Height with Lid		Overall Width
			rpm	kw	rpm	kw	rpm	kw	Before	After	
<b>SUPS50</b>	50	60	6-24	1	3-30	1	0-2800	2	2200	2800	1300
<b>SUPS 100</b>	100	120	6-24	1	3-30	1	0-2800	2	2500	3000	1450
<b>SUPS 200</b>	200	240	6-24	2	3-30	2	0-2800	5	2800	3250	1550
<b>SUPS 500</b>	500	600	6-24	5	3-30	5	0-2800	10	3050	3700	1750
<b>SUPS 750</b>	750	900	6-24	7.5	3-30	7.5	0-2800	15	3250	3900	1900
<b>SUPS 1000</b>	1000	1200	6-24	7.5	3-30	7.5	0-2800	15	3600	4200	1950
<b>SUPS 2000</b>	2000	2400	6-24	15	3-30	15	0-2800	20	4400	4900	2200
<b>SUPS 5000</b>	5000	6000	6-24	20	3-30	20	2800	25	4500	5100	2700
<b>SUPS 10000</b>	10000	12000	6-24	50	3-3-	50	2800	50	5600	6150	3200



## S.K. Pharma Machinery Pvt. Ltd.

**Office** : 205, 2nd Floor, Bhoomi Velocity IT Park, Road No. 23, Wagle Indl. Estate,  
Thane – 400604. Maharashtra, India

**Tel.** : +91 22 2580 6700 / 2580 1025 / 2583 3757 • Email: sales@skpharmamachinery.com

**Works** : 1806/13, GIDC, Phase III, Umbergaon, Dist. Valsad – 396171, Gujarat, India.

**Tel.** : +91 260 2561805 / 06